















Cubicle Curtains

Designed Specially for HEALTHCARE

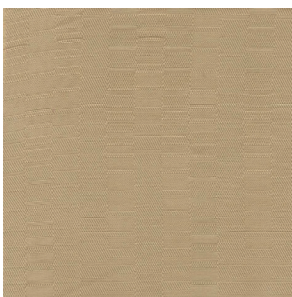
Curtain Features

-  Double-fold, built in Mesh Header
-  Rust-proof Grommets spaced every 6"
-  1" Double-stitched bottom and side hems
-  Seamless construction for railroaded ("off the roll") fabrics/patterns
-  French folds for non-railroaded curtains ("up the roll" patterns)
-  White or Buff Mesh Options

Fabric Features

-  Fabric Content: 100% FR Polyester Trevira
-  NFPA 701 Fire Resistant
-  Neutral Solid Woven Patterns
-  72" Width Railroaded
-  Repeat: 16" V., 7.5" Height
-  Maintenance: Machine wash to 160°F. Tumble dry to 140°F.
-  Finishes Available: Antimicrobial
-  We can customize any color!

Chi-Luxe Fabric Colors Available:



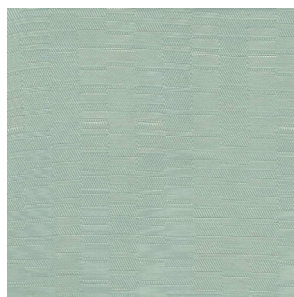
Taupe



Spa



Stone



Sugarloaf Bay

Tin

Please visit our [Textile Gallery \(www.cubecare.com/textiles\)](http://www.cubecare.com/textiles) and select **Cubicle Curtains** to see the largest selection of cubicle/privacy curtains available.