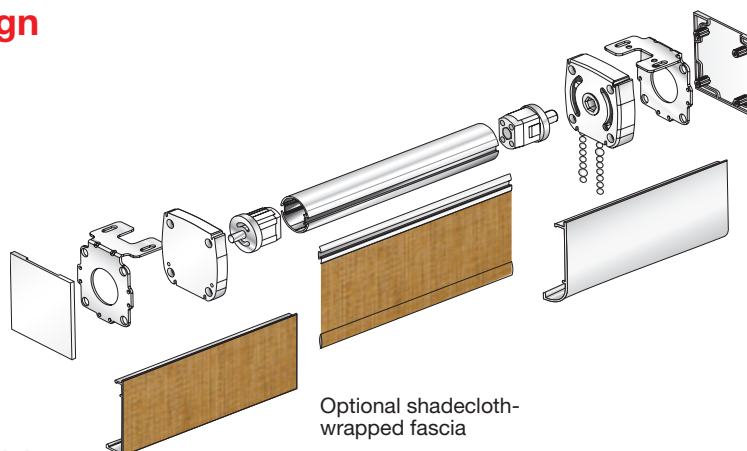


UrbanShade™ System

Compact and versatile design

The new UrbanShade™ System is a competitively priced, high-design window covering. It's easily reconfigured in the field for special site conditions. The system is suitable for residences, home theaters, commercial spaces, and A/V and conference areas. Featuring high-quality and durable components, UrbanShade™ is ideal when aesthetics, flexibility, and competitive pricing are desirable.

UrbanShades™ are available as a Standard assembly or a Prefabricated Cassette.



Models

- Manual—smooth operation with a continuous bead chain
- Motorized—battery powered with RTS wireless remote control
- Motorized—low voltage with wireless RTS + dry-contact control (available summer 2010)

Economical

- Cost effective—competitively priced

Reliability

- Sturdy—heavy-duty steel support brackets with ultra-durable composite housing
- Powerful—allows for shades up to 10 ft. (305cm) high
- Reliable—ten-year non-depreciating warranty

Design attributes

- Versatile—integrated and interchangeable components
- Flexible—universal mounting brackets provide for easy on-site reconfiguration
- Compact—small edge-clearance to reduce light leaks
- Sleek—refined, unobtrusive profile

Easy installation

- Innovative—universal mounting brackets (wall, ceiling, or jamb)
- Adaptable—interchangeable left and right drive brackets
- Efficient—optional Prefabricated Cassette for fast installation
- Manageable—SnapLoc® Mini spline enables easy shadecloth removal and maintenance

Controls

- Simple—manual hand-operated continuous bead chain
- Interoperative—optional wireless RF/RTS or hard-wired low-voltage control
- Direct—optional dry-contact daisy-chained switch control

Options

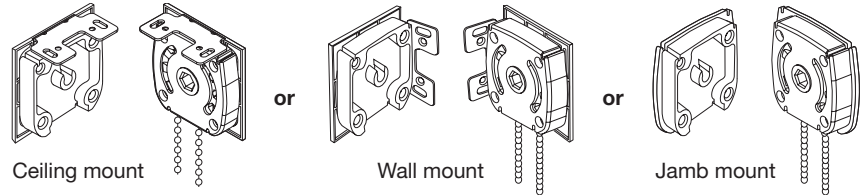
- Decorative—SnapLoc® fascia as square or radius, continuous or captured, and baked enamel finish or shadecloth wrapped
- Room darkening—side and sill channels
- Functional—Lift-Assist Mechanism for heavy manual shades

Manual UrbanShade™ System

Standard shade prices include:

One pair of universal UrbanShade™ brackets, chain, chain retainer, shadecloth with shadecloth-covered hembar, SnapLoc® spline, and a 1¼ in. or 1⅜ in. SnapLoc® tube. Shadecloths that are railroaded are turned width for height.

Universal mounting



Standard components:

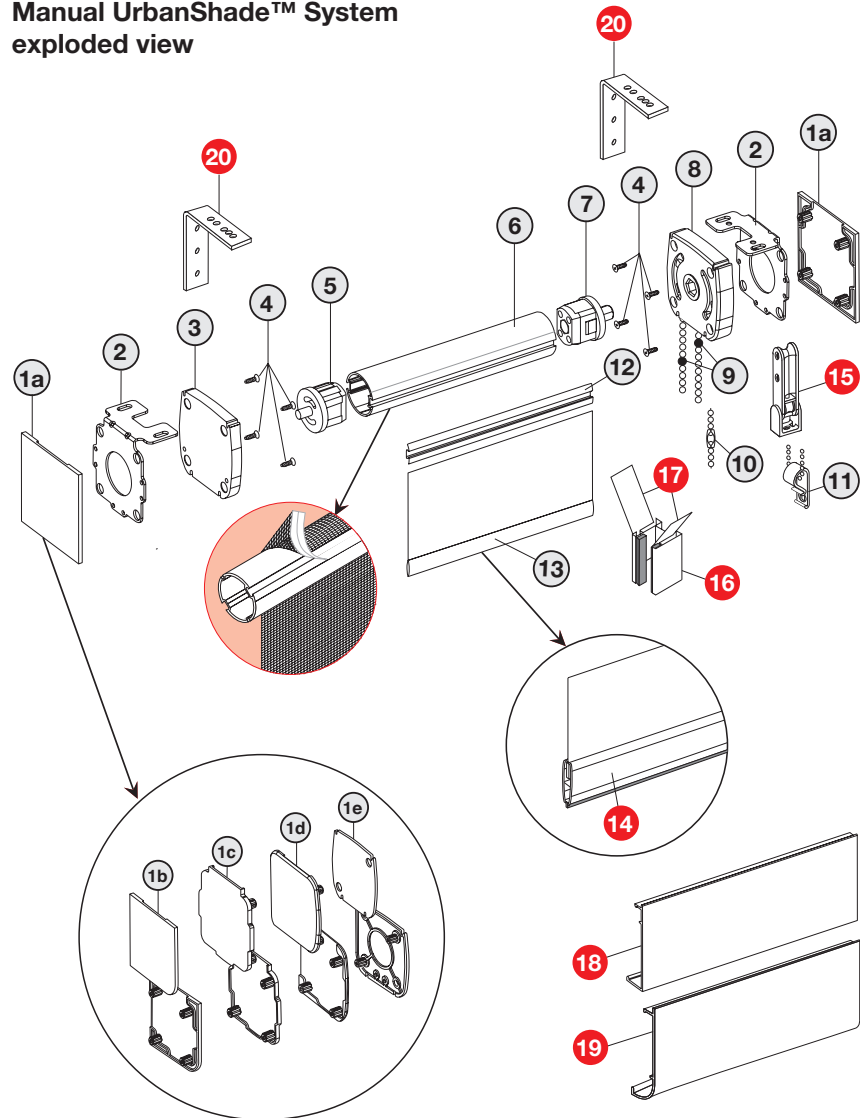
End Plate options:

- ①a Square Fascia Captured End Plate
- ①b Round Fascia Captured End Plate
- ①c Universal Continuous Backplate (square or round fascia)
- ①d No Fascia Backplate
- ①e Universal Jamb-Mount Continuous End Plate (square or round fascia)
- ② Concealed Steel Mounting Plate
- ③ Idle-End Housing
- ④ Screws
- ⑤ Idle-End Tube Plug or LAM if required (not shown)
- ⑥ SnapLoc® Tube
- ⑦ Drive-End Tube Plug
- ⑧ Drive-End Housing for manual shades
- ⑨ Upper and Lower Bead Chain Stops for manual shades
- ⑩ Bead Chain Connector for manual shades
- ⑪ Chain retainer for manual shades
- ⑫ SnapLoc® Mini Spline
- ⑬ Standard light seal hembar

Optional accessories:

- ⑭ Exposed Hembar with Light Seal
- ⑮ Spring-Loaded Tension Pulley Chain Retainer for manual shades
- ⑯ Room-Darkening Side Channel (single)
- ⑰ Room-Darkening Shadecloth Guides (pair)
- ⑱ SnapLoc® Regular-Roll Fascia—square
- ⑲ SnapLoc® Regular-Roll Fascia—radius
- ⑳ Wall-mount extension bracket

Manual UrbanShade™ System exploded view

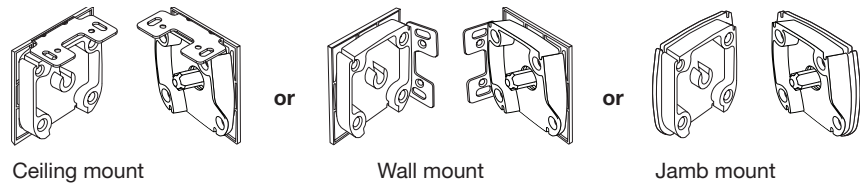


Motorized UrbanShade™ System

Standard shade prices include:

One pair of universal UrbanShade™ brackets, shadecloth with shadecloth-covered hembar, battery powered motor, battery pack, SnapLoc® spline, and a 1⅜ in. SnapLoc® tube. Shadecloths that are railroaded are turned width for height.

Universal mounting



Standard components:

End Plate options:

- 1a Square Fascia Captured End Plate
- 1b Round Fascia Captured End Plate
- 1c Universal Continuous Backplate (square or round fascia)
- 1d No Fascia Backplate
- 1e Universal Jamb-Mount Continuous End Plate (square or round fascia)
- 2 Concealed Steel Mounting Plate
- 3 Idle-End Housing
- 4 Screws
- 5 Idle-End Tube Plug
- 6 SnapLoc® Tube
- 7 SnapLoc® Mini Spline
- 8 Hembar (standard shadecloth covered)

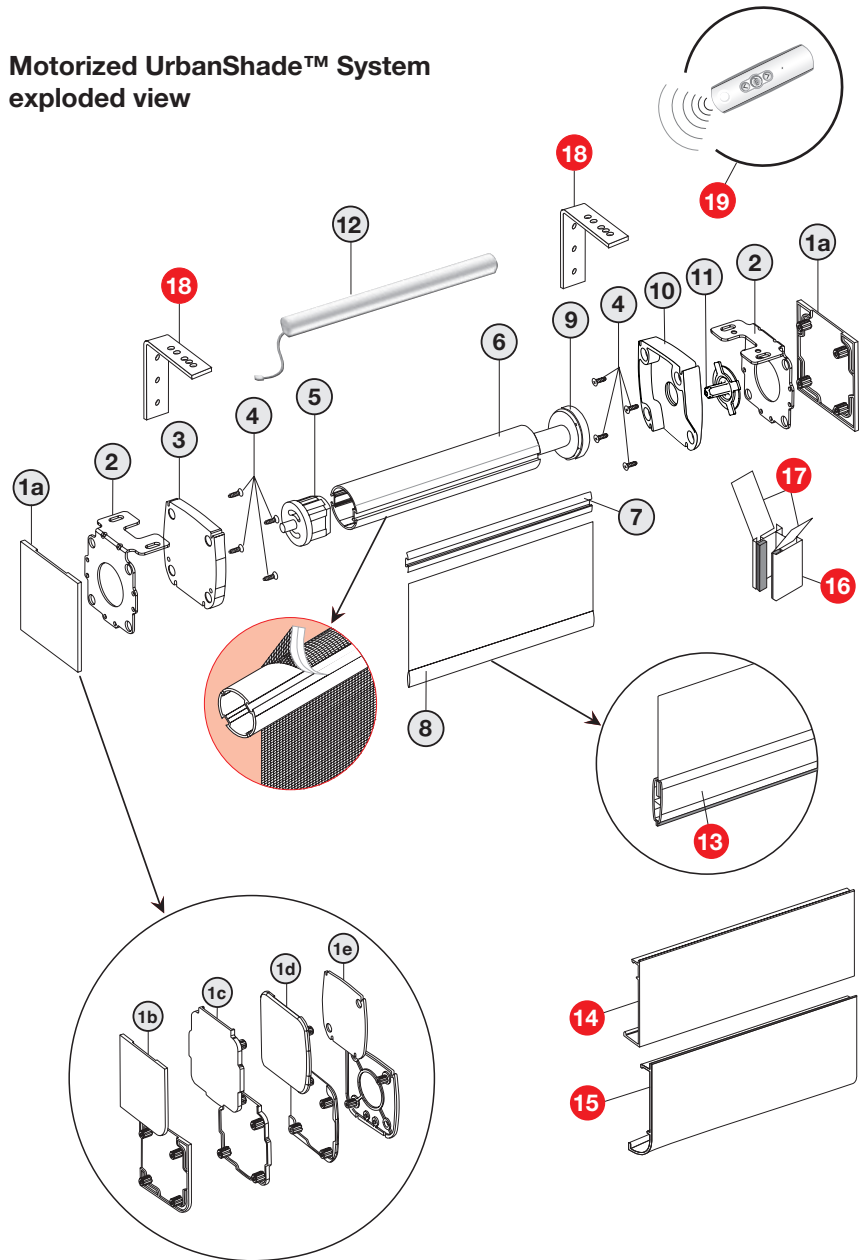
Standard motorized components:

- 9 24V Motor
- 10 Drive End Housing for motorized shades
- 11 Motor Spindle
- 12 Battery pack

Optional accessories:

- 13 Exposed Hembar with Light Seal
- 14 SnapLoc® Regular-Roll Fascia—square
- 15 SnapLoc® Regular-Roll Fascia—radius
- 16 Room-Darkening Side Channel (single)
- 17 Room-Darkening shadecloth Guides (pair)
- 18 Wall-mount extension bracket
- 19 RTS Wireless Remote

Motorized UrbanShade™ System exploded view



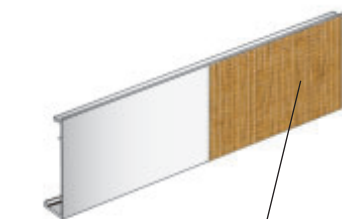
UrbanShade™ System fascia and specifications

Fascia colors:

- White (WH)
- Colonial White (CW)
- Alabaster (AL)
- Clear Anodized (CA)
- Grey (GR)
- Quaker Bronze (QB)
- Black (BK)

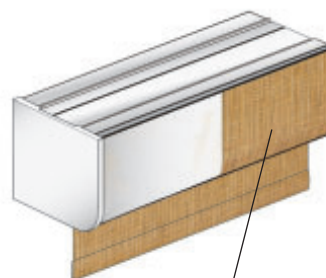
(Shadecloth-wrapped fascia will match shadecloth color, however shadecloth-wrapped end caps are not available)

Square fascia



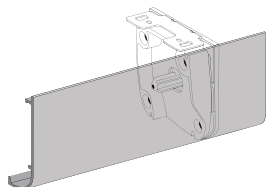
Optional shadecloth wrapped

Radius fascia

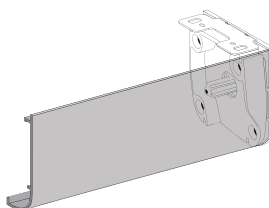


Optional shadecloth wrapped
(Optional cassette model shown)

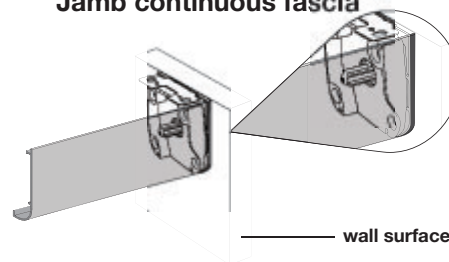
Continuous fascia



Captured fascia



Jamb continuous fascia



Specifications

Dimensions: mounting brackets	• 2¾ in. (7cm) deep x 2¾ in. (7cm) high	
Mounting	• Wall, ceiling, or jamb mounting; reconfigurable on-site; truly universal	
Bracket description	• Heavy duty, zinc plated, steel encased in a high impact, decorative matte-finish composite housing	
Roll-up diameter (RUD)	• 2.46 in. (63mm) allows shades of up to 10 ft. (305cm) or higher	
Edge Clearances	<ul style="list-style-type: none"> • Drive end 11/16 in. (17mm) • Idle end 5/8 in. (16mm) 	
Hardware options	<ul style="list-style-type: none"> • Continuous or captured end caps • Lift-Assist Mechanism (LAM) • Room-Darkening Side and Sill Channels 	<ul style="list-style-type: none"> • Standard Shadecloth-Covered Hembar • Optional Universal Exposed Hembar
Bracket color options	• White, Grey, or Black	
Fascia profiles	• Square or radius, continuous or captured end plates, baked enamel finish or shadecloth wrapped	
Fascia color options	• White (WH), Clear Anodized (CA), Grey (GR), Quaker Bronze (QB), Black (BK), Colonial White (CW), Alabaster (AL)	
Lift capacity (manual shade)	• 11 lbs. (5kg) of shadecloth with Lift-Assist Mechanism (LAM)	
Maximum width, single band	• 96 in. (244cm) wide	
Back-to-back bracket option	<ul style="list-style-type: none"> • Single bracket provides idle to idle, drive to drive or drive to idle mounting options. Faster installations with fewer brackets to install. Easier alignment of shades for continuous fascia. Reduces shadecloth edge-clearance by an 1/8 in. (3.17mm) per bracket. Contact your local MechoShade Systems' representative for availability 	
Motorization options	<ul style="list-style-type: none"> • Battery-powered motor, wireless RTS, lifting capacity is approx. 6 lbs. (2.7kg) • WhisperShade® low voltage, 2Nm tubular motor, wireless RTS, lifting capacity approx. 17 lbs. (7.7kg). Contact your local MechoShade Systems' representative for availability. 	
Warranty	• Ten-year non-depreciating warranty	